



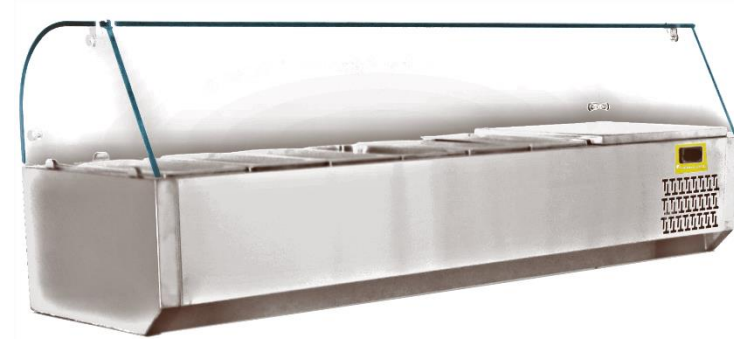
Project Name: _____
 Location: _____
 Item #: _____ Qty: _____

Model: TRC60FG & TRC60CG 6-Pan Refrigerated Condiment Rail

ThermalRite Refrigerated Cold Wall Condiment Rail can be purchased separately or as part of one of our complete ThermalRite prep table units. This unit can be used for any prep table with an overall width of at least 60 7/8". This condiment rail is designed to keep refrigerated ingredients close at hand in a glass-protected environment. This self-contained refrigeration unit is manufactured with the highest regard for quality and energy efficiency.



TRC60FG



TRC60CG

Standard Feature

- Easy-to-use touch screen control, with built in power switch.
- Energy-efficient refrigeration system.
- Ecological R134A refrigerant
- Rear breathing, front exhaust, keeps the dust from clogging the condenser coil.
- High performance polyurethane foam insulation
- Manual defrost
- AISI 304 Grade Stainless Steel interior and exterior
- Interior rounded corners for easy cleaning
- Holds 6 - 1/3-pans (not included)
- Meets the guideline demands of HAACP
- Flat glass sneeze guard

Warranty

- 2-years parts and labor warranty

Options

- Curved glass sneeze guard

Specifications for TRC60FG & TRC60CG Refrigerated Condiment Rail
 ThermalRite Refrigerated Condiment Rail, an above-the counter, refrigerated glass display unit, can be purchased separately or as part of one of our complete prep table units.

PAN CAPACITY
 6 - 1/3-pans (not included)

DIMENSIONS
 60 7/8"W x 16.13"D x 19.56"H

ELECTRICAL SUPPLY
 120VAC/60HZ/1PH

HP
 1/12

FLA/Circuit Ampacity
 2/15

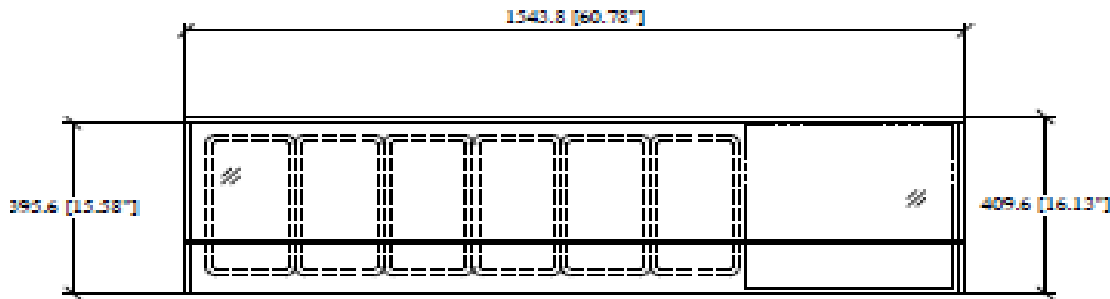
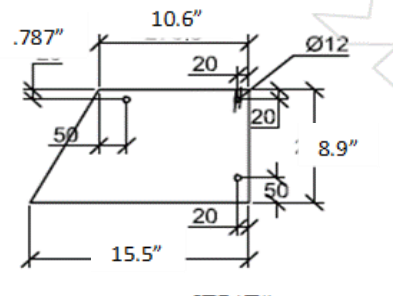
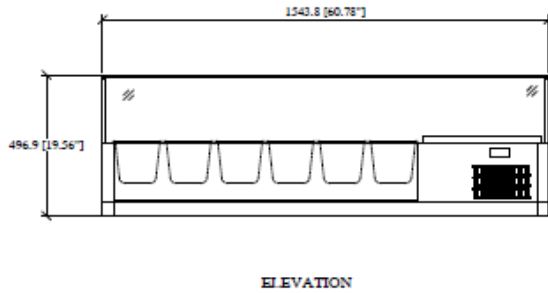
WATTS
 283

CONFORMS TO UL STD.471 CERTIFIED TO CSA STD.C22.2 No.120 & NSF/ANSI 7	Date: 04/2018



Project Name: _____
 Location: _____
 Item #: _____ Qty: _____

Model: TRC60FG & TRC60CG 6-Pan Refrigerated Condiment Rail



Standard Features Design

ThermalRite Refrigerated Condiment Rails, are an outstanding value in today's foodservice marketplace. Ample pan capacity provides space to keep your ingredients at the right temperatures. Focusing on the latest technology and high-quality materials and components, this unit offers reliable product temperatures, lower utility costs, and the ability to adhere to food safety standards.

Model Features

- 2" digits on digital display.

- Rounded interior corners for easy cleaning

Cabinet Construction

- Sturdy, stainless steel construction for durability and to resist scratches and dents.
- High performance polyurethane foam.
- Insulation thickness of 2" is more than that offered by most competitors
- Interior rounded corners for easy cleaning

Refrigeration System

- Factory engineered, self-contained cold wall system using environmentally friendly, CFC-free R134a refrigerant.

Electrical

- Unit completely pre-wired at factory and ready for final connection to a dedicated outlet
- Cord and plug included
- 115VAC/60Hz/1PH 15amp

Warranty

- 2-year Warranty on parts and labor

TRC60FG TRC60CG	DIMENSIONS			AMBIENT TEMP	SHIPPING			
	WIDTH	DEPTH	HEIGHT		DIMENSIONS	WEIGHT		
	60.78"	16.15	19.56		100 °F	64.78" x 20.15" x 24.00"	200	
ELECTRICAL DATA							COMPRESSOR	
VOLTS	HZ	PH	AMPS	AMP FUSE	NEMA	CORD LENGTH	WATT	HP
120	60	1	2.36	15	5-15P 	8'	283	1/8



Every Step of the Way

15600 37th Avenue N, Suite 100
 Plymouth, MN 55446
 1-800-328-3968