

PBF-450-TS-CAB-1DR Modular Blast Chiller & Shock Freezer

BLAST CHILLER/FREEZER SPECIFICATIONS

The standard modular blast chiller and shock freezer solution includes the panel walk-in, controller, and evaporator. The high-capacity unit is well suited to a high-volume professional kitchen workflow, making it possible to improve your kitchen efficiency and food quality while staying within HACCP guidelines.

Standard features include an advanced touch screen controller with USB port, holding cycle (once your cycle is completed the unit automatically switches over to a cooler), a single point product core probe, and up to 99 customized recipe programs.

Touch screen controller



**PBF450-TS
P/N 4507**

EVAPORATOR OUTSIDE DIMENSIONS

(single evaporator coil only)
28.8" W x 16.67" D x 72.08" H

OUTPUT CHILLING CAPACITY*

450 lbs within 90 minutes

OUTPUT FREEZING CAPACITY*

270 lbs in 240 minutes

OUTPUT THAWING CAPACITY*

0°F/38°F 90 lbs within 240 minutes
0°F/38°F 180 lbs within 480 minutes
0°F/38°F 270 lbs within 720 minutes

REFRIGERANT:

R448A as standard

HEAT LOAD BTU/HR:

41,780/-10°F SST/+95°F ambient

ELECTRICAL SUPPLY:

208/240 VAC, 1PH 30 Amp

20 A circuit, # 12 wire required

STANDARD FEATURES

- New advanced 7" Gorilla glass touch screen controller with USB port on easy-to-use control panel
- Holding cycle: automatically switches over to holding mode after each cycle is completed
- One single point product core probe registers product temperatures
- Meets the demands of HACCP guidelines for proper food chilling
- Automatic air defrost
- Evaporator is enclosed in a frame and cabinet
- Programmable controller with up to 99 customized options
- Electric thawing heaters

WARRANTY

- Three-year warranty on parts and labor
- Additional warranty for years 4-5 on compressor (parts only)

A COMPLETE SOLUTION

The package includes a PrepRite® walk-in, perfectly designed to fit your blast chiller/freezer needs. The walk-in is available with 1 or 2 doors, external ramp, 8" deep interior ramp designed to accommodate 1 roll-in rack at 32" x 32" x 74" and features our exclusive anti-bacterial Sanisteel interior metal finish.

Condensing units for this walk-in blast chiller are available at additional cost. There are four condensing units available with this product:

PBF-450-R448-CU-208/230
PBF-450-R448-CU-460/3PH
PBF-450-R404-CU-208/230/3PH
PBF-450-R404-CU-460/3PH

Notes: Solenoid valve must be supplied by the refrigeration contractor during install.

The installation of the blast chiller/freezer and the installation of the remote condensing unit must be performed by a qualified professional. All specifications are subject to change without notice.

Note: * Performance ratings for this unit are based on exterior dimensions of 64.5" W x 50" D x 88"H. Your performance results may vary based on the interior dimensions of your unit and the characteristics of the food being processed. Contact your regional sales person for more information.

The technical drawings for the PBF450 walk-in freezer are as follows:

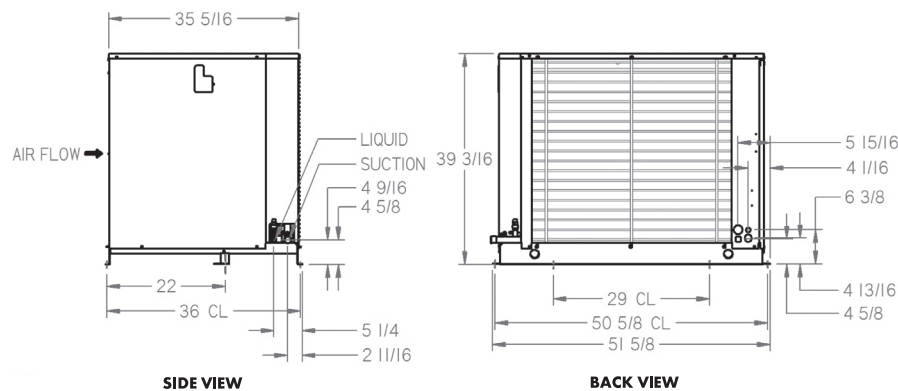
- FRONT VIEW:** Shows the front of the unit with four circular fans. Dimensions include a total width of 28.80, a fan spacing of 16.40, and a fan diameter of 12.40. The height is divided into sections of 10.49, 17", 17", 17", and 10.59.
- SIDE VIEW:** Shows the side profile of the unit. Dimensions include a top width of 16.67, a door opening width of 14.04, a door thickness of 9.80, and a total height of 72.08.
- TOP VIEW:** Shows the top of the unit. Dimensions include a total width of 28.86, a door opening width of 28.80, a door thickness of 3", and a total depth of 16.67.
- PBF450 WALK-IN PLAN VIEW:** Shows the interior layout of the walk-in freezer. Dimensions include a total width of 5'-4 1/2", a door opening width of 4'-8 1/2", a door thickness of 4", a door swing radius of 34", and a door height of 7 1/2".
- PBF450 WALK-IN FRONT VIEW:** Shows the front of the walk-in freezer with the door open. Dimensions include a total width of 7'-4" and a door height of 7'-4".

EVAPORATOR MODEL		DIMENSIONS			
PBF450-TS 4507	OUTSIDE			SHIPPING	
	WIDTH	DEPTH	HEIGHT	DIMENSIONS	WEIGHT
	28.8"	16.67"	72.08"	81" x 41" x 19.5"	400 lbs

PBF450 WALK-IN DIMENSIONS (ins)		
WIDTH	DEPTH	HEIGHT
64.5	50	88

MAXIMUM LOAD PER CYCLE		ELECTRICAL DATA					REFRIGERATION DATA		
Chill	Freeze	Volts	Hz	Phase	Amps	Circuit Amps	Refrigerant	Suction Line	Liquid Line
450 lbs	270 lbs	208-240	60	1	8.92	20	R448A	1.38	0.38

All dimensions in inches



ELECTRICAL DATA – SUPPLY 3 PH/208-240 V/60 Hz											
Compressor(s)		Fan Motor(s)			Electric Ratings						
RLA	LRA	Qty.	Hp	FLA	Defrost Type	High or Low Amps	Contactors	MCA	MOPD	Evap. Fan Amps	Defrost Heater Amps
27.6	161	1	1/3	2.7	Air Defrost	High Amps	1	75	80	20	60

UNIT SPECIFICATIONS									
Refrigerant	Connections (ins)		Receiver 90% Full (lbs)		Fan Blade(s) Dia. (ins)	Sound Data (dB)	Approx. Net Weight (lbs)	Shipping Weight (lbs)	Shipping Dims. (ins) L x W x H
	Liquid Line	Suction	Standard	Oversized					
R448A	0.5	1.125	28	52	22	81	805	992	36.75 x 51.75 x 39.25

The installation of the blast chiller/freezer and the installation of the remote condensing unit must be performed by a qualified professional.
All specifications are subject to change without notice.



Walk-In Coolers/Freezers • Restoration & Replacement Doors • Cook-Chill Specialty Solutions • Parts, Service & Warranty • Construction Services
15600 37th Ave N • Suite 100 • Plymouth, Minnesota 55446 • 888-227-1629 • www.Everidge.com • info@everidge.com